



# Flight Plan & Site Survey

Created using **RPAS Wilco**<sup>®</sup>

Reference No:	E17199
Title:	Northern Alberta FPV league
Pilot Name:	[REDACTED]
Pilot Certificate:	[REDACTED]
Flight Start:	July 23, 2024 5:10 PM
Flight End:	July 23, 2024 7:10 PM
Flight Area (Latitude):	53° 23' 48.30" N ( 53.397 )
Flight Area (Longitude):	113° 0' 49.90" W ( -113.014 )
Altitude - Radius:	Alt: 400 ft - Rad: 926.0 m ( 0.5 nm)
Classification:	UNCONTROLLED
FIR - Contact:	CZEG - 780-890-8397

Please ensure you received all required authorizations prior to flight.

## Disclaimer

This Site Survey was created using RPAS Wilco by AIM Robotics. The flight plan contained is intended only for RPAS flights on the date/time and location specified. The user accepts all responsibility for the accuracy and completeness of the information contained.

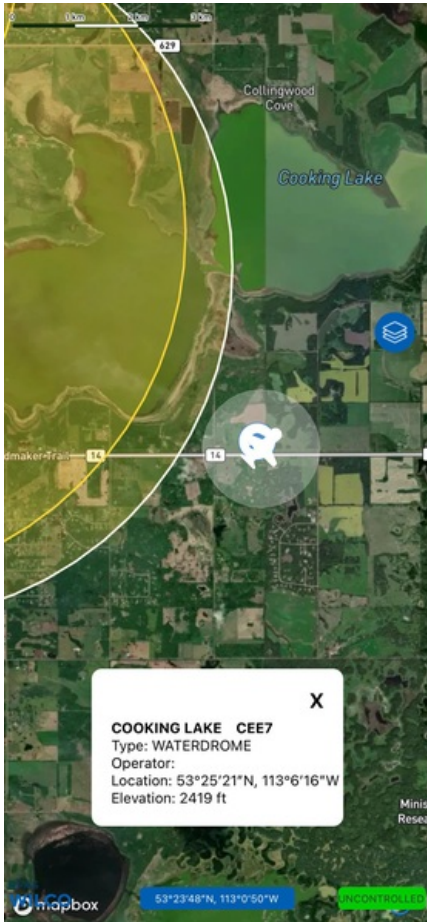
For the complete Terms & Conditions, see

<https://rpaswilco.com/#/tnc>

## Included

- Site Survey
- Obstacles (if available)
- Nearby Aerodromes
- Canadian Aviation Regulations
- GFA
- Aerodrome Supplements
  - METAR & TAF (if available)
  - NOTAMS
  - CFS



## Flight Map



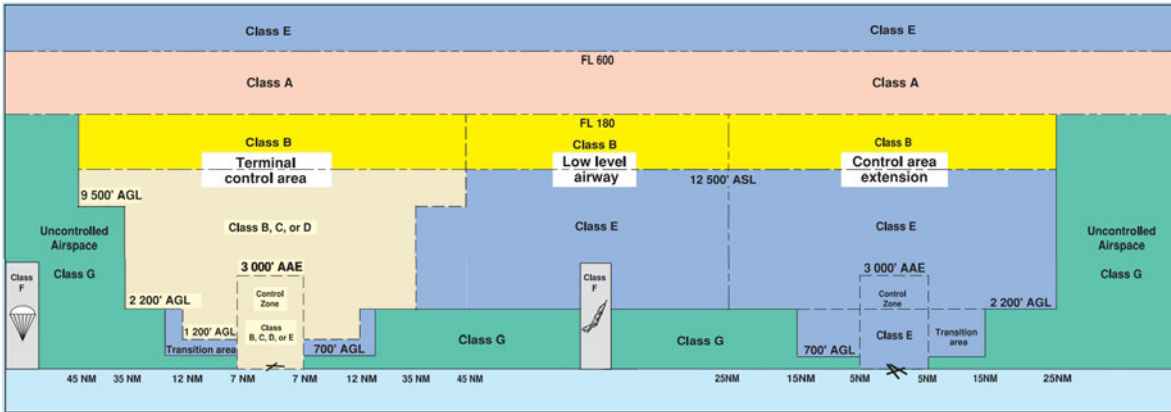
## RPAS Specification

- **Manufacturer:**  
MAAC
- **Model:**  
MODEL AIRPLANE
- **Registration Number:**  
[REDACTED]
- **Eligible for advanced operations:**  
Yes
- **Manufacturer RPAS safety assurance:**
  - **Controlled Airspace:** YES
  - **Near People:** NO
  - **Over People:** NO

## MAP Details

	Latitude	Longitude
 <b>MODEL</b>	53° 23' 48.30" N ( 53.397 )	113° 0' 49.90" W ( -113.014 )
 <b>Pilot</b> Randall Hepner	53° 23' 51.90" N ( 53.3977 )	113° 0' 53.50" W ( -113.0149 )

## Airspace Classification



## Overlying Airspaces

Class	Name	Floor	Ceiling
E	T682 Airway	2200AGL	12500MSL
B	T682 Airway	12500MSL	18000MSL
C	Edmonton, AB TCA	7000MSL	9500MSL
C	Edmonton, AB TCA	4600MSL	7000MSL
B	Edmonton, AB TCA	12500MSL	18000MSL
C	Edmonton, AB TCA	9500MSL	12500MSL
E	Edmonton, AB CAE	12500MSL	12500MSL
B	Edmonton, AB CAE	12500MSL	18000MSL

## Nearest Aerodromes & Distance from Operation

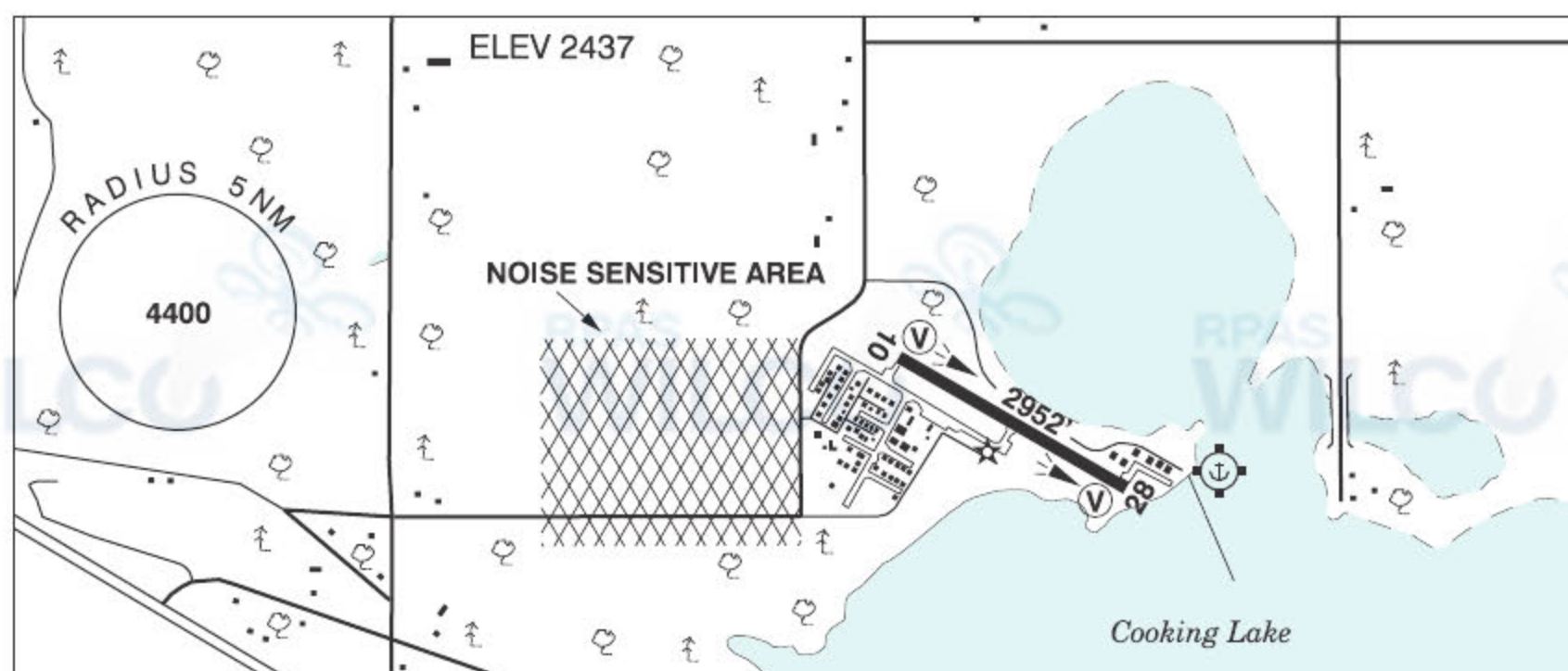
COOKING LAKE (CEE7 - WATERDROME - )	Lat: 53.422	Long: -113.104	6.601KM	3.56NM	NW
COOKING LAKE (CEZ3 - AERODROME - Reg)	Lat: 53.427	Long: -113.116	7.559KM	4.08NM	NW
TWIN ISLAND AIRPARK (CEE6 - AERODROME - Reg)	Lat: 53.471	Long: -113.154	12.424KM	6.71NM	NW
TOFIELD (CEV7 - AERODROME - Reg)	Lat: 53.371	Long: -112.697	21.209KM	11.45NM	E
BAILEY (CBY2 - HELIPOINT - Reg)	Lat: 53.508	Long: -113.236	19.219KM	10.38NM	NW

## ALBERTA

## AERODROME/FACILITY DIRECTORY

## EDMONTON / COOKING LAKE AB

CEZ3



<b>REF</b>	N53 25 39 W113 06 56 16SE 15°E (2015) UTC-7(6) Elev 2437' VTA A5015 LO2 CAP
<b>OPR</b>	Cooking Lake Condominium Association 780-964-2272 Reg
<b>PF</b>	A-1 D-2,3,4,5,6
<b>CUST</b>	AOE/CAN
<b>FLT PLN</b>	
<b>FIC</b>	Edmonton 780-890-8386 or Edmonton 866-WXBRIEF (Toll free within Canada) or 866-541-4102 (Toll free within Canada & USA)
<b>ACC</b>	Edmonton IFR 888-358-7526
<b>SERVICES</b>	
<b>FUEL</b>	100LL
<b>OIL</b>	All
<b>S</b>	1,2,3,4,5,6
<b>RWY DATA</b>	Rwy 10(105°)/28(285°) 2952x75 ASPH Rwy 28 up 0.44% AGN II
<b>RCR</b>	Opr
<b>LIGHTING</b>	10-(TE ME) V1, 28-(TE ME) V1 ARCAL-123.35 type K
<b>COMM</b>	
<b>MF</b>	tfc 123.35 5NM 4600 ASL excluding Edmonton TCA (CAR 602.98) (Refer to Edmonton VTPC)
<b>ARR</b>	Edmonton Tml 119.5
<b>DEP</b>	Edmonton Tml 119.5
<b>VFR ADV</b>	Edmonton Tml 127.4 in Class C
<b>PRO</b>	For VFR rtes see Edmonton VTPC or as directed by ATC. Pilots are to avoid over-flying noise sensitive area depicted on A/D sketch at less than circuit alt (3500 ASL). Edmonton Class C Airspace overlies A/D. TRANSPONDER MANDATORY - A/cft operating in Edmonton Class C require a discrete transponder code which may be obtained by filing a flt plan or ctc 888-358-7526 at least 30 min prior to entering. IFR Training Restriction: PPR for IFR tng flights. Ctc ATC 888-358-7526 no more than 24 hrs prior to ETD.

## ALBERTA

## AERODROME/FACILITY DIRECTORY

## EDMONTON / TWIN ISLAND AIRPARK AB

CEE6

<b>REF</b>	N53 28 16 W113 09 16 12SE 15°E (2013) UTC-7(6) Elev 2435' VTA A5015	
<b>OPR</b>	Twin Island Resident's Association 780-922-2596 Reg PPR	
<b>PF</b>	B-1 C-2,3,4,5,6	
<b>FLT PLN</b>	<b>FIC</b> Edmonton 780-890-8386 or Edmonton 866-WXBRIEF (Toll free within Canada) or 866-541-4102 (Toll free within Canada & USA) <b>ACC</b> Edmonton IFR 888-358-7526	
<b>RWY DATA</b>	Rwy 06(062°)/24(242°) 2900x100 GRASS <b>RCR</b> Opr Ltd win maint	
<b>COMM</b>	<b>MF</b> tfc 123.35 5NM centred on Cooking Lake land A/D 3NM SE 4600 ASL excluding Edmonton TCA (CAR 602.98) (Refer to Edmonton VTPC)	
<b>PRO</b>	Rgt hand circuits Rwy 24 (CAR 602.96). For VFR routes see Edmonton VTPC or as directed by ATC. Edmonton Intl Class C airspace 4600 ASL and above overlies A/D. TRANSPONDER MANDATORY - Acft operating in Edmonton Class C require a discrete transponder code which may be obtained by filing a flt pln or ctc 888-358-7526 at least 30 min prior to entering.	

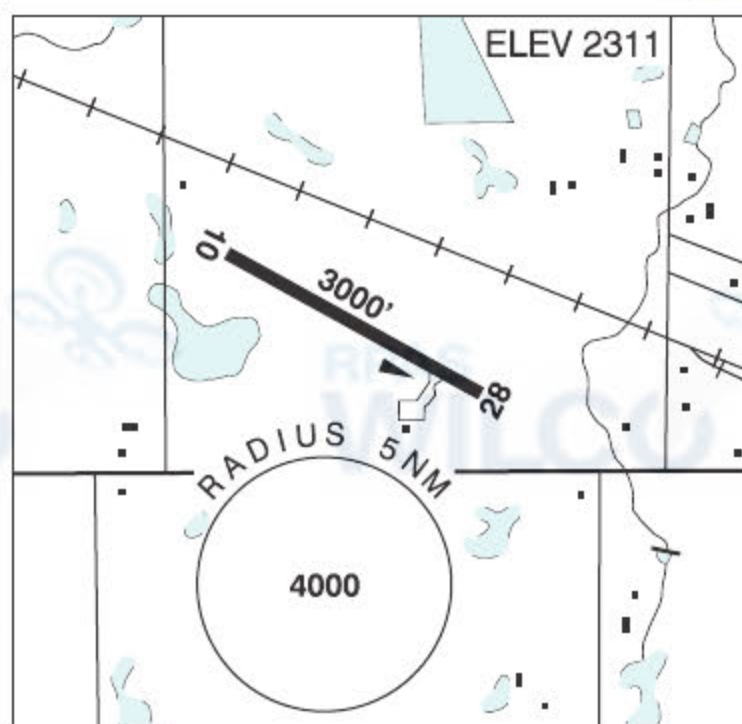
## ALBERTA

## AERODROME/FACILITY DIRECTORY

## TOFIELD AB

CEV7

<b>REF</b>	N53 22 16 W112 41 48 Adj W 15°E (2012) UTC-7(6) Elev 2311' VTA A5015
<b>OPR</b>	Town of Tofield 780-662-3269 Reg
<b>PF</b>	A-1 C-2,3,4,5
<b>FLT PLN</b>	
<b>FIC</b>	Edmonton 780-890-8386 or Edmonton 866-WXBRIEF (Toll free within Canada) or 866-541-4102 (Toll free within Canada & USA)
<b>ACC</b>	Edmonton IFR 888-358-7526
<b>SERVICES</b>	
<b>FUEL</b>	100LL
<b>RWY DATA</b>	Rwy 10(103°)/28(283°) 3000x75 ASPH
<b>RCR</b>	Opr Ltd win maint
<b>COMM</b>	
<b>ATF</b>	tfc 123.2 5NM 5400 ASL
<b>PRO</b>	Rgt hand circuits Rwy 10 (CAR 602.96).
<b>CAUTION</b>	Model acft activity Apr 1-Sep 30.



## ALBERTA

## AERODROME/FACILITY DIRECTORY

## EDMONTON / BAILEY AB (Heli)

CBY2

<b>REF</b>	N53 30 28 W113 14 11 Adj 15°E (2014) UTC-7(6) Elev 2392' VTA A5015	
<b>OPR</b>	Dan Jacobs 780-416-2626 or 780-910-4141 Reg PPR	
<b>PF</b>	C-1,2,3,4,5,6	
<b>FLT PLN</b>		
<b>FIC</b>	Edmonton 780-890-8386 or Edmonton 866-WXBRIEF (Toll free within Canada) or 866-541-4102 (Toll free within Canada & USA)	
<b>ACC</b>	Edmonton IFR 888-358-7526	
<b>SERVICES</b>		
<b>S</b>	1,4,6	
<b>HELI DATA</b>	FATO/TLOF 88' x 305' GRASS Safety Area 138' x 385' Max heli overall length 58.7'	
<b>RCR</b>	Opr Day only	
<b>COMM</b>		
<b>ATF</b>	tfc 123.2 5NM 3400 ASL	
<b>PRO</b>	Arr/dep btwn 353°-015° fr heli and Arr/dep btwn 146°-202° fr heli 8% (H3). Avoid overflying nearby residences. Ctc Edmonton Tml before entering Class C airspace. Edmonton Intl Class C airspace 4600 ASL and above overlies A/D. TRANSPONDER MANDATORY - Acft operating in Edmonton Class C require a discrete transponder code which may be obtained by filing a flt pln or ctc 888-358-7526 at least 30 min prior to entering.	
<b>CAUTION</b>	P-Lines W of heli.	

# Canadian Aviation Regulations

## Division III — General Operating and Flight Rules

For full listing please visit : <https://laws-lois.justice.gc.ca/eng/regulations/SOR-96-433/FullText.html#s-901.27>

### Visual Line-of-sight

- **901.11 (1)** Subject to subsection (2), no pilot shall operate a remotely piloted aircraft system unless the pilot or a visual observer has the aircraft in visual line-of-sight at all times during flight.
- **(2)** A pilot may operate a remotely piloted aircraft system without the pilot or a visual observer having the aircraft in visual line-of-sight if the operation is conducted in accordance with a special flight operations certificate — RPAS issued under section 903.03.

### Procedures

- **901.23 (1)** No pilot shall operate a remotely piloted aircraft system unless the following procedures are established:
  - **(a)** normal operating procedures, including pre-flight, take-off, launch, approach, landing and recovery procedures; and
  - **(b)** emergency procedures, including with respect to
    - **(i)** a control station failure,
    - **(ii)** an equipment failure,
    - **(iii)** a failure of the remotely piloted aircraft,
    - **(iv)** a loss of the command and control link,
    - **(v)** a fly-away, and
    - **(vi)** flight termination.
- **(2)** If the manufacturer of the remotely piloted aircraft system provides instructions with respect to the topics referred to in paragraphs (1)(a) and (b), the procedures established under subsection (1) shall reflect those instructions.
- **(3)** No pilot shall conduct the take-off or launch of a remotely piloted aircraft unless the procedures referred to in subsection (1) are reviewed before the flight by, and are immediately available to, each crew member.
- **(4)** No pilot shall operate a remotely piloted aircraft system unless the operation is conducted in accordance with the procedures referred to in subsection (1).

### Site Survey

**901.27** No pilot shall operate a remotely piloted aircraft system unless, before commencing operations, they determine that the site for take-off, launch, landing or recovery is suitable for the proposed operation by conducting a site survey that takes into account the following factors:

- **(a)** the boundaries of the area of operation;
- **(b)** the type of airspace and the applicable regulatory requirements;
- **(c)** the altitudes and routes to be used on the approach to and departure from the area of operation;
- **(d)** the proximity of manned aircraft operations;
- **(e)** the proximity of aerodromes, airports and heliports;
- **(f)** the location and height of obstacles, including wires, masts, buildings, cell phone towers and wind turbines;
- **(g)** the predominant weather and environmental conditions for the area of operation; and
- **(h)** the horizontal distances from persons not involved in the operation.

### Operations at or in the Vicinity of an Aerodrome, Airport or Heliport

- **901.47 (1)** No pilot shall operate a remotely piloted aircraft at or near an aerodrome that is listed in the *Canada Flight Supplement* or the *Water Aerodrome Supplement* in a manner that could interfere with an aircraft operating in the established traffic pattern.
- **(2)** Subject to section 901.73, no pilot shall operate a remotely piloted aircraft at a distance of less than
  - **(a)** three nautical miles from the centre of an airport; and
  - **(b)** one nautical mile from the centre of a heliport.
- **(3)** No pilot shall operate a remotely piloted aircraft at a distance of less than three nautical miles from the centre of an aerodrome operated under the authority of the Minister of National Defence unless the operation is conducted in accordance with a special flight operations certificate — RPAS issued under section 903.03.

### Records

- **901.48 (1)** Every owner of a remotely piloted aircraft system shall keep the following records:
  - **(a)** a record containing the names of the pilots and other crew members who are involved in each flight and, in respect of the system, the time of each flight or series of flights; and
  - **(b)** a record containing the particulars of any mandatory action and any other maintenance action, modification or repair performed on the system, including
    - **(i)** the names of the persons who performed them,
    - **(ii)** the dates they were undertaken,
    - **(iii)** in the case of a modification, the manufacturer, model and a description of the part or equipment installed to modify the system, and
    - **(iv)** if applicable, any instructions provided to complete the work.
- **(2)** Every owner of a remotely piloted aircraft system shall ensure that the records referred to in subsection (1) are made available to the Minister on request and are retained for a period of
  - **(a)** in the case of the records referred to in paragraph (1)(a), 12 months after the day on which they are created; and
  - **(b)** in the case of the records referred to in paragraph (1)(b), 24 months after the day on which they are created.
- **(3)** Every owner of a remotely piloted aircraft system who transfers ownership of the system to another person shall, at the time of transfer, also deliver to that person all of the records referred to in paragraph (1)(b).